

**STODDART**  
METAL FABRICATORS

TOM STODDART Pty Ltd ACN 009 690 251  
215 Jackson Rd Sunnybank Hills Qld 4109  
PO Box 420 Sunnybank Qld 4109  
Phone (617) 3345 5011 Fax (617) 3344 1000  
Email sunnybank@stoddart.com.au

*Quality in stainless steel*

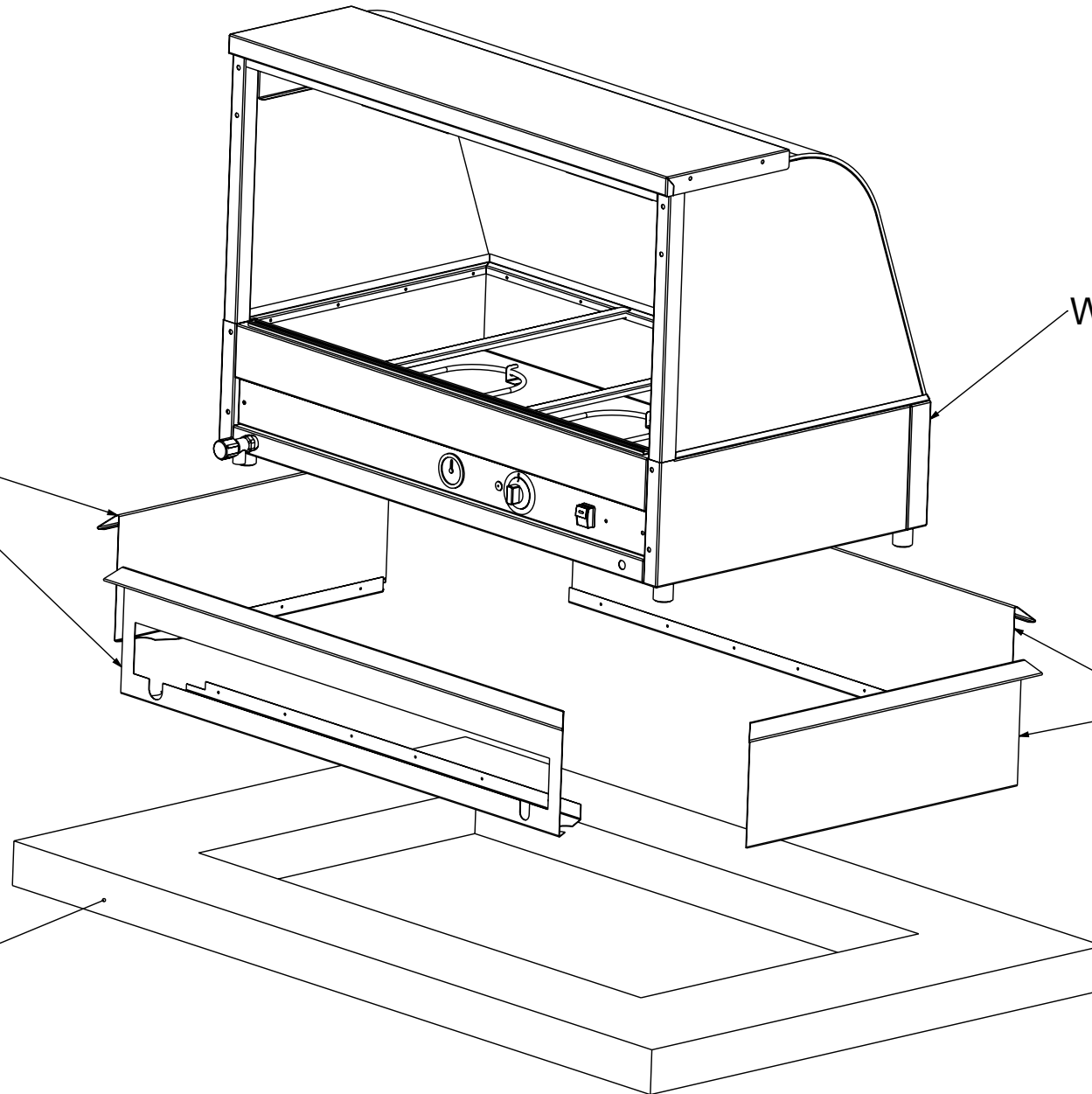
Press:		Programmed by:		Date:	Punch:	Die:
PRODUCT: Woodson Dropin Kit Bench Display PART No: <b>WDIK In-Bench Display</b>						
DRAWN	NAME	SIGNATURE	DATE	UNLESS OTHERWISE SPECIFIED: DIMENSIONS ARE IN MILLIMETERS		DESCRIPTION:
APPV'D			11/07/2006	MATERIAL:		REVISION
			THICKNESS:		DWG No: <b>WDIK In-Bench Display</b>	
			FINISH:		A	
DO NOT SCALE DRAWING			This drawing remains the property of Tom Stoddart Pty Ltd & cannot be reproduced without prior permission.			
			A3		Sheet 1 of 4	

Woodson Drop-in Kit Pieces

Woodson Food Display

Woodson Drop-in Kit Pieces

Bench Top with correct size cutout



Press:	Programmed by:	Date:	Punch:	Die:
--------	----------------	-------	--------	------

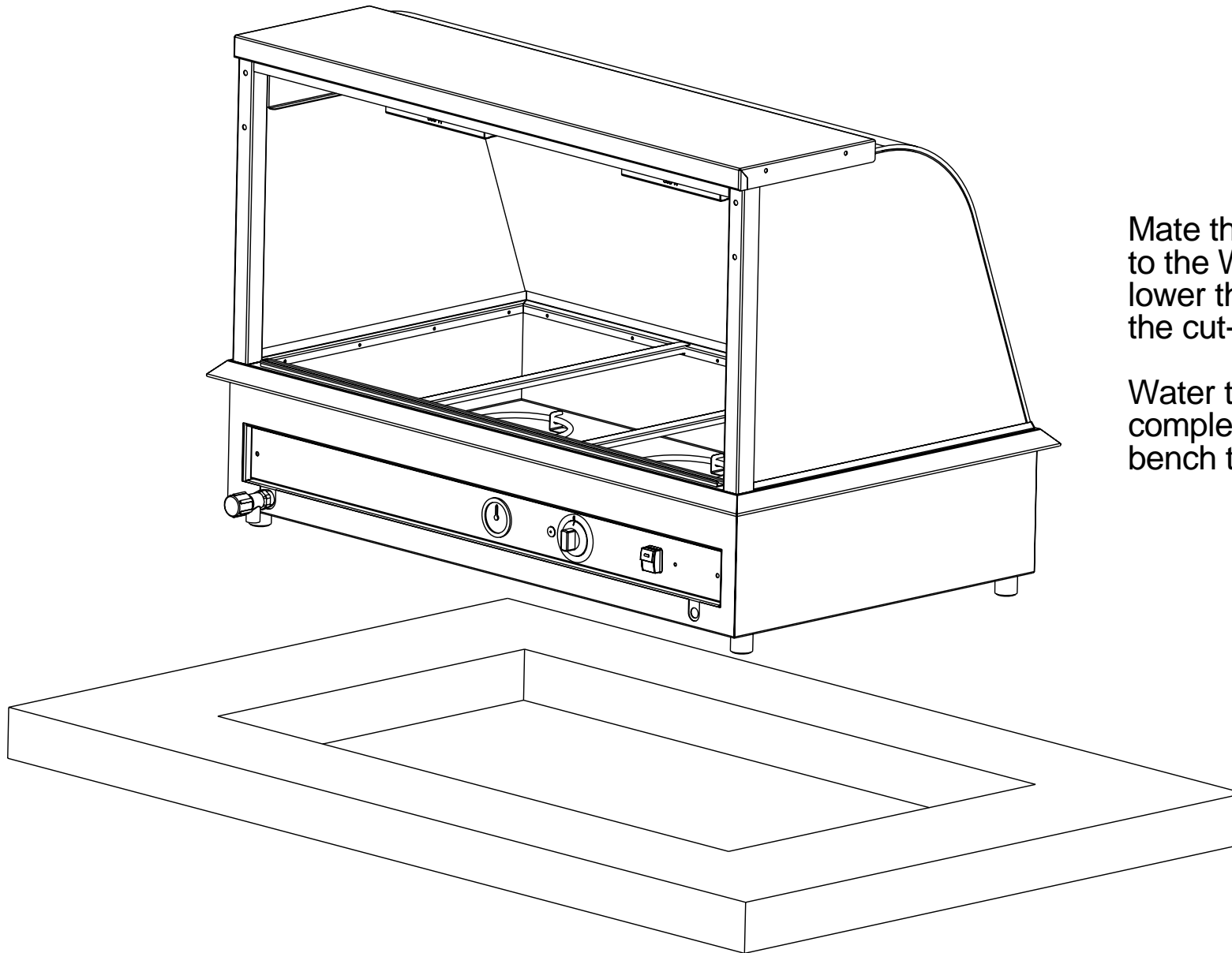


**STODDART**  
METAL FABRICATORS

TOM STODDART Pty Ltd ACN 009 690 251  
215 Jackson Rd Sunnybank Hills Qld 4109  
PO Box 420 Sunnybank Qld 4109  
Phone (617) 3345 5011 Fax (617) 3344 1000  
Email sunnybank@stoddart.com.au

*Quality in stainless steel*

PRODUCT: Woodson Dropin Kit Bench Display					PART No: <b>WDIK In-Bench Display</b>	
DRAWN	NAME	SIGNATURE	DATE	UNLESS OTHERWISE SPECIFIED: DIMENSIONS ARE IN MILLIMETERS	DESCRIPTION:	
APPV'D			11/07/2006	MATERIAL:	REVISION	
				THICKNESS:	DWG No: <b>WDIK In-Bench Display</b>	
				FINISH:	A	
DO NOT SCALE DRAWING		This drawing remains the property of Tom Stoddart Pty Ltd & cannot be reproduced without prior permission.			A3	Sheet 2 of 4



Mate the Woodson Drop-in kit pieces to the Woodson Food Display and lower the complete assembly through the cut-out in the bench top.

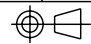
Water tap must be attached after the complete assembly is mounted in the bench top.



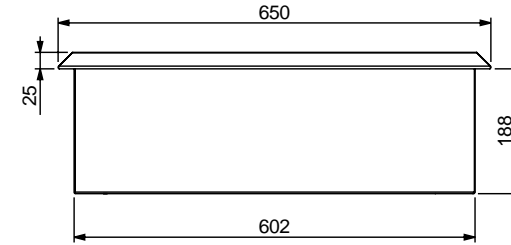
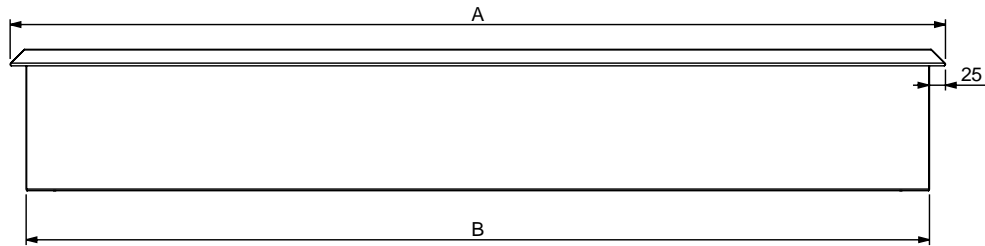
**STODDART**  
METAL FABRICATORS

TOM STODDART Pty Ltd ACN 009 690 251  
215 Jackson Rd Sunnybank Hills Qld 4109  
PO Box 420 Sunnybank Qld 4109  
Phone (617) 3345 5011 Fax (617) 3344 1000  
Email sunnybank@stoddart.com.au

*Quality in stainless steel*

Press:		Programmed by:		Date:	Punch:	Die:	
PRODUCT: Woodson Dropin Kit Bench Display						PART No: <b>WDIK In-Bench Display</b>	
DRAWN	NAME	SIGNATURE	DATE	UNLESS OTHERWISE SPECIFIED: DIMENSIONS ARE IN MILLIMETERS		DESCRIPTION:	
APPV'D			11/07/2006	MATERIAL:		REVISION	
				THICKNESS:		DWG No: <b>WDIK In-Bench Display</b>	
				FINISH:			<b>A</b>
DO NOT SCALE DRAWING			This drawing remains the property of Tom Stoddart Pty Ltd & cannot be reproduced without prior permission.				A3
						Sheet 3 of 4	

## Note: 4 Bay Drop In Kit Shown



Note: 2 Bay Drop In Kit "A" = 755  
 3 Bay Drop In Kit "A" = 1080  
 4 Bay Drop In Kit "A" = 1405  
 5 Bay Drop In Kit "A" = 1730  
 6 Bay Drop In Kit "A" = 2055

Note: 2 Bay Drop In Kit hole cut out "B" = 715 x 615  
 3 Bay Drop In Kit hole cut out "B" = 1040 x 615  
 4 Bay Drop In Kit hole cut out "B" = 1365 x 615  
 5 Bay Drop In Kit hole cut out "B" = 1690 x 615  
 6 Bay Drop In Kit hole cut out "B" = 2015 x 615

Press:	Programmed by:	Date:	Punch:	Die:
--------	----------------	-------	--------	------

**STODDART**  
 METAL FABRICATORS  
 TOM STODDART Pty Ltd ACN 009 690 251  
 215 Jackson Rd Sunnybank Hills Qld 4109  
 PO Box 420 Sunnybank Qld 4109  
 Phone (617) 3345 5011 Fax (617) 3344 1000  
 Email sunnybank@stoddart.com.au  
*Quality in stainless steel*

PRODUCT: Woodson Dropin Kit Bench Display				PART No: <b>WDIK24-A001</b>	
DRAWN	NAME	SIGNATURE	DATE	UNLESS OTHERWISE SPECIFIED: DIMENSIONS ARE IN MILLIMETERS	
APPV'D			11/07/2006	DESCRIPTION: Exploded View	
			MATERIAL:		REVISION
			THICKNESS:		WDG No: <b>WDIK In-Bench Display</b>
			FINISH:		<b>A</b>
DO NOT SCALE DRAWING			This drawing remains the property of Tom Stoddart Pty Ltd & cannot be reproduced without prior permission.		
			A3	Sheet 4 of 4	