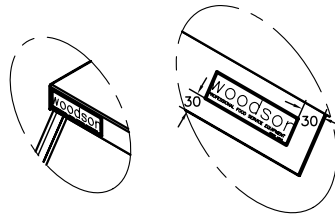
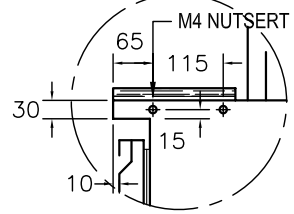


**Optional**

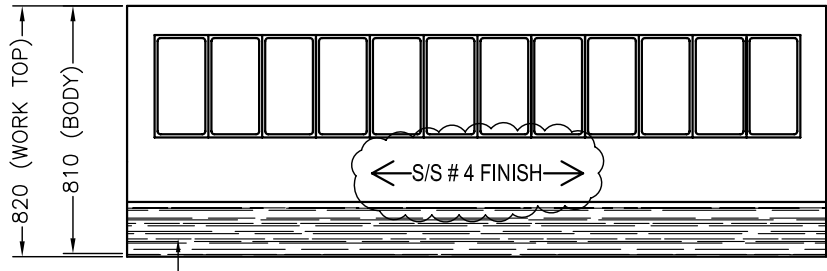
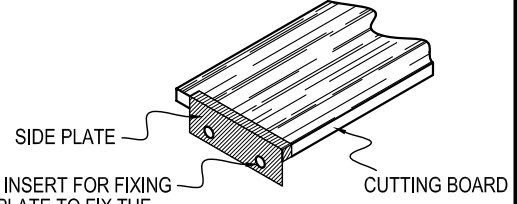
- Cutting board
- Crumb tray with S/S wire shelf



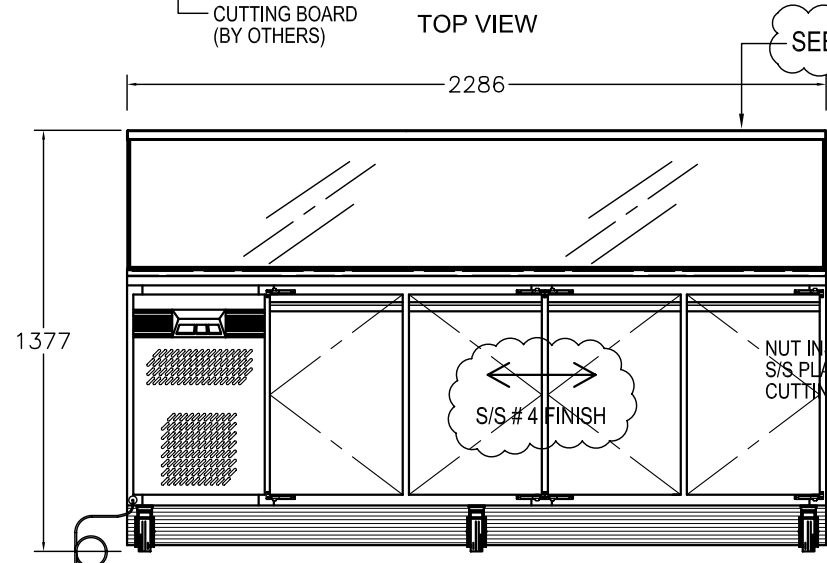
FOR SAME CURVE PROFILE AS WOODSON



DETAIL A

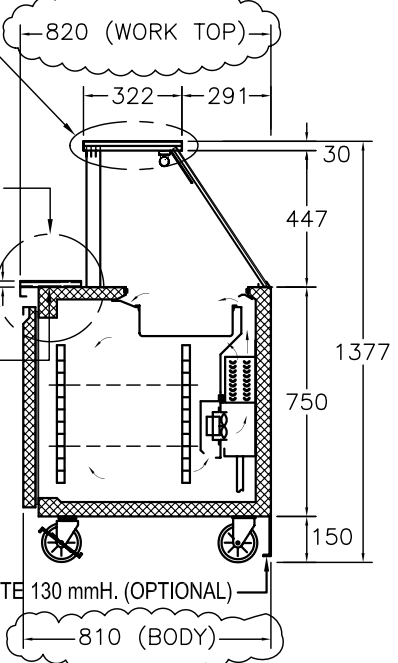


TOP VIEW



SEE DETAIL B

SEE DETAIL A



SIDE VIEW

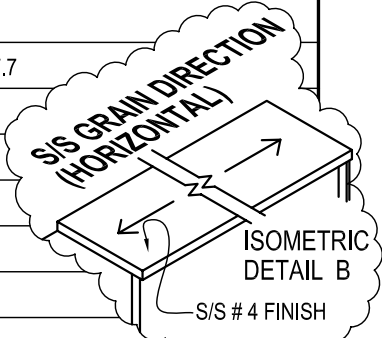
**NOTE :**  
 - WORK TOP DEPTH TO 820 mm.  
 - BODY DEPTH TO 810 mm.

KICK PLATE 130 mmH. (OPTIONAL)

KICK PLATE 130 mmH. (OPTIONAL)

TECHNICAL DATA	Refrigerator model
a) MODEL NUMBER	WSMS 2286 - L
b) DIMENSION L x D x H (Cm.)	228.6 x (82+81) x 137.7
c) TEMPERATURE RANGE	2 °C to 5 °C
d) REFRIGERANT	R-404a
e) COOLING CAPACITY (Btu.)	2671
f) CONDENSING UNIT (Hp.)	1/3
g) WIRE SHELVES	8 pieces
h) PAN (100 mm. Depth)	12 GN 1/3
i) POWER SUPPLY	220V - 50Hz - 1Ph

**NOTE :**  
 S/S # 4 FINISHED  
 ↔ REFERS TO  
 S/S GRAIN DIRECTION  
 (HORIZONTAL)



**Sandwich preparation counter**

<b>WELBILT</b> Manufacturing(Thailand)Ltd.	UNLESS OTHERWISE NOTED		PROJECT: <b>WOODSON</b>	P/O NO.
	DESIGN DIMENSIONS ARE IN mm.		PRODUCT: <b>AS ABOVE SPECIFIED</b>	QTY.
SCALE	NTS.	DWG. NO. <b>WSMS 2286 - L</b>	PAGE NO.	DATE: <b>15/10/07</b>
SA1:	SA2:	MN1:	MN2:	REVISION: <b>J</b>
				APPROVED:
				AA: